

# NI "BU" Series

## Features

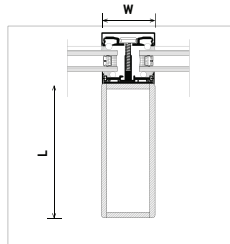
- Traditional Mullion look that can reach higher span
- Solid steel cylinder laser-fused
- Structurally enhanced (up to 50ft)
- Thermally broken system
- Customized Beauty cap
- 100% Robotic fabrication process (Laser welding)
- Mullion width and depth: Custom size
- Glass thickness: 1" AND 1-3/4" available
- Finish:
  - + Steel: Powder coat (AAMA 2603 / 2605)
  - + Aluminum: PVDF 70% (AAMA 2603 / 2605)
- Steel Grade and Aluminum Alloy:
  - + Steel: A36 or higher
  - + Aluminum: 6061/6063 (T5 & T6) available
- Front system:
  - + Stick built (Beauty cap and SSG), Toggle SSG and Cassette available
  - + Compatible to Schuco / YKK system
- Thermal Separator (Polyamide)

## Advantage

- Thermally Broken system
- Easy to install
- Custom Free Form design
- Custom Depth and Width of Mullion
- Larger day light opening from interior Look
- Compitable to Schuco and YKK system
- Traditional Mullion Look
- Greater Strength: Up to 50ft Span
- Greater Windload Capacity

## Thermal Performance

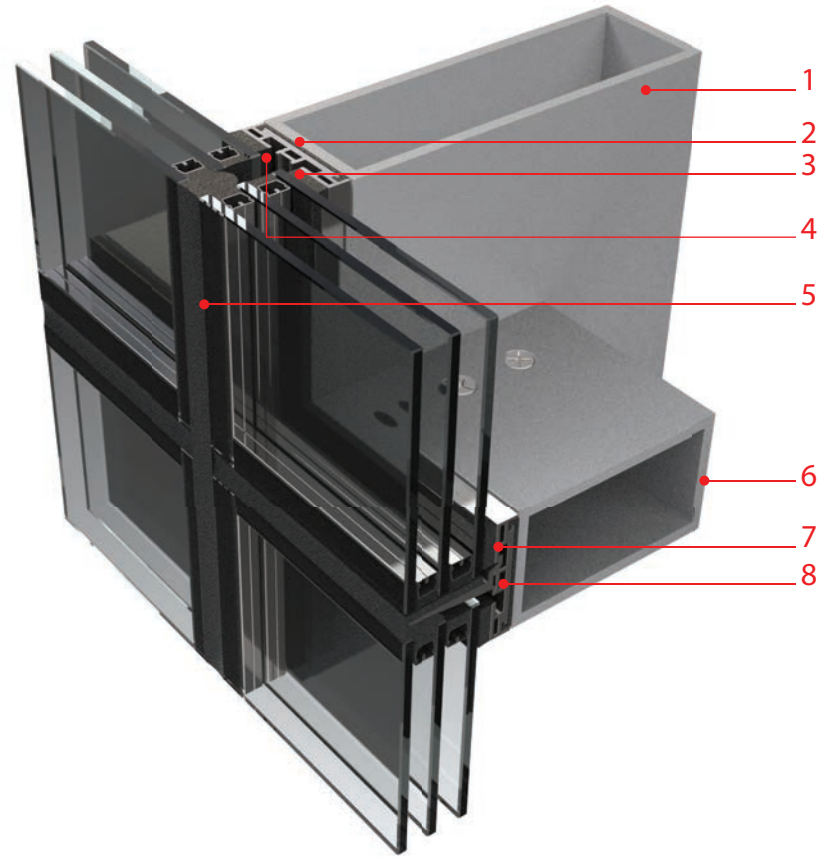
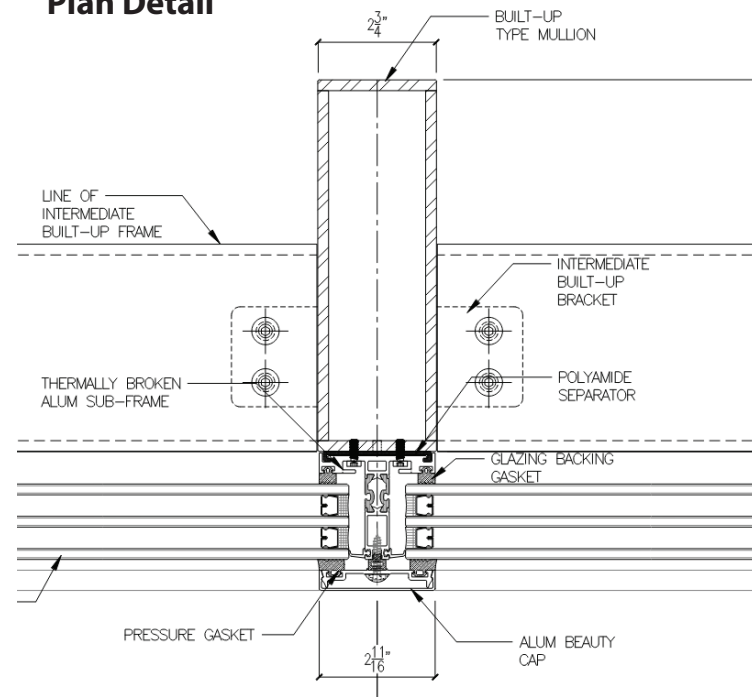
\*U-Factor: 0.22 - 0.25  
 \*SHGC: 0.21  
 \*\*\*NFRC 100-2023



Feature	Value
Manufacture	100% Laser cut / welding
Finish	Powder coat
Connection Type	2 side / 4 side / Captured
Application	Structure-centered [Rigidity]
Elevation Width (mm)	60
Length (mm)	90 120 150 180 220



## Plan Detail



- 1. Vertical "BU" Mullion (Laser Fused)
- 2. Thermal separator (Polyamide)
- 3. Alum. receptor
- 4. Structural sealant
- 5. Weather sealant
- 6. Horizontal Mullion
- 7. Spacer
- 8. Glass chair

