



 **NI STEEL**
LASER WELDING STEEL PRODUCT



“NI Steel Corp”

is the curtain-wall expert active in production and supply of high quality of architectural building materials specialized in Façade products. We are a full-service Steel curtain-wall company currently based in New York City with the aim of assisting architects with designing/engineering and supplying the system.

“STEEL - Best Choice of Facade Material”

-Strength: Steel is stronger than aluminum, with a modulus of elasticity that's three times greater. This means that steel can support larger spans, heavier glass, and more wind loads than aluminum in smaller profiles.

-Design freedom: Steel's strength allows for narrower frame profiles, which can reduce the number of mullions needed and lower installation costs. Steel can also support complex building projects.

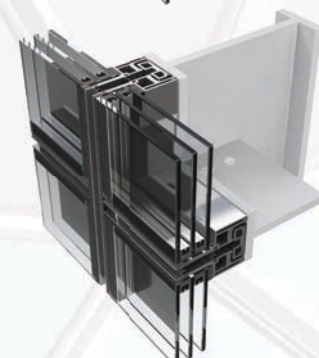
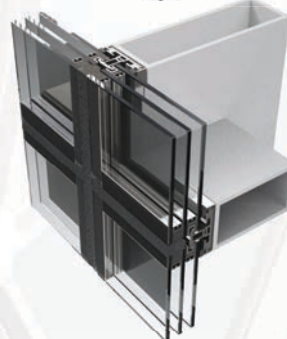
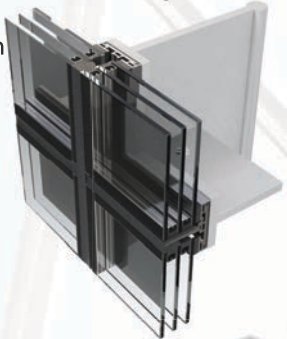
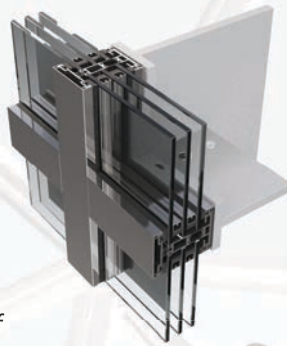
-Aesthetics: Steel curtain wall framing systems can have a more attractive appearance by having narrow/sharp profile and being fully customized.

-Structural integrity: Steel's strength makes it ideal for larger window and door frames.

| | Steel (A36) | Aluminum (6061) |
|-----------------------------------------------|-------------|-----------------|
| Tensile Strength - Ultimate (MPa) | 400 – 550 | 310 |
| Elasticity (GPa) | 200 | 68.9 |
| Thermal Conductivity (Kcal/MH ⁰ C) | 40 | 200 |
| Formability | High | Low |
| Durability | High | Low |
| Cost | Low | High |
| Maximum span (ft) | Up to 60 ft | Up to 25 ft |

“Quality is not an act, it is a habit” – Aristotle

The Primary approach of our company is based on the simple analogy that the success of our clients equates our success as well and this shall be our guiding principle in every transaction. Via digital computing fabrication process of robotic welding and cutting, NI Steel has greatly succeeded minimizing the fabrication tolerance and errors. All NI Steel's systems have been engineered and certified by the major testing laboratories in South Korea and reaching results at the highest level. Taking a delight in purchasing and using the products that guarantee the highest performance and quality is your choice.



NI “T” Series

Most Popular series
Contemporary Look - “Sharp and Narrow”

| Feature | |
|----------------------|----------------------------|
| Manufacture | 100% Laser cut / welding |
| Finish | Powder coat |
| Connection Type | 2 side / 4 side / Captured |
| Application | Design-centered [Slimness] |
| Elevation Width (mm) | 60 |
| Length (mm) | 90 120 150 180 220 |
| | *SIZE CAN BE CUSTOMIZED |

NI “R” Series

Advanced version of “T Series”
Solid steel cylinder Laser-fused @ back side

| Feature | |
|----------------------|----------------------------|
| Manufacture | 100% Laser cut / welding |
| Finish | Powder coat |
| Connection Type | 2 side / 4 side / Captured |
| Application | Design-centered [Slimness] |
| Elevation Width (mm) | 60 |
| Length (mm) | 90 120 150 180 220 |
| | *SIZE CAN BE CUSTOMIZED |

NI “BU” Series

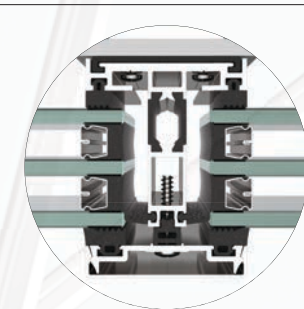
Traditional Look

| Feature | |
|----------------------|-------------------------------|
| Manufacture | 100% Laser cut / welding |
| Finish | Powder coat |
| Connection Type | 2 side / 4 side / Captured |
| Application | Structure-centered [Rigidity] |
| Elevation Width (mm) | 60 |
| Length (mm) | 90 120 150 180 220 |
| | *SIZE CAN BE CUSTOMIZED |

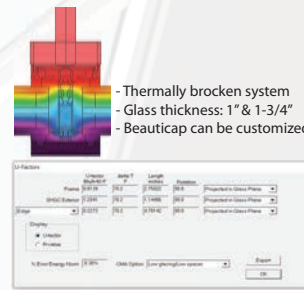
NI “I” Series

Traditional Magnificent Look

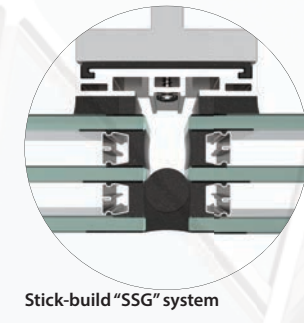
| Feature | |
|----------------------|-------------------------------------------------------------|
| Manufacture | 100% Laser cut / welding |
| Finish | Powder coat |
| Connection Type | 2 side / 4 side / Captured |
| Application | Design-centered [Slimness] Structure-centered [Rigidity] |
| Elevation Width (mm) | 60 |
| Length (mm) | 90 120 150 180 220 |
| | *SIZE CAN BE CUSTOMIZED |



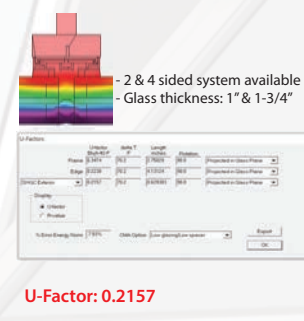
Stick-built “Beauticap” system



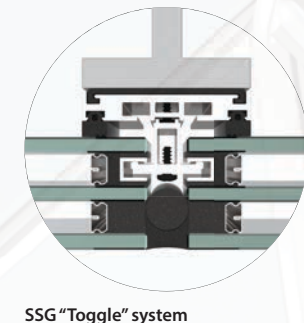
U-Factor: 0.2273



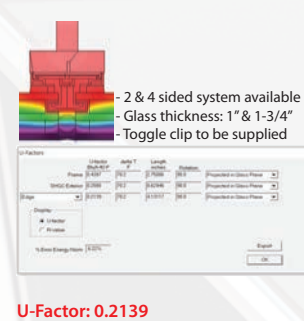
Stick-built “SSG” system



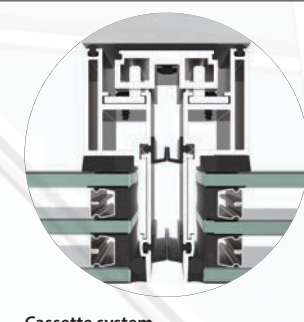
U-Factor: 0.2157



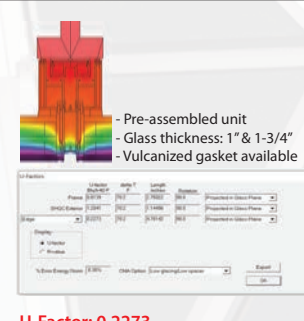
SSG “Toggle” system



U-Factor: 0.2139



Cassette system



U-Factor: 0.2273



“Design freely and Build simply with NI Steel”

By NI Steel Curtain-wall Series fully engineered and fabricated by the process of robotic digital fabrication (Laser cutting and welding), you are led to design more freely and install more simply. NI Steel has developed its systems to meet ASTM and KS (Korean standard) requirements, and the products can always be customized to achieve your design intention.

| Front (Alum)→ System ↓ Back (Steel) | Stick- Beauty cap | Stick- SSG | SSG - Toggle | Cassette System |
|-------------------------------------------|-----------------------------------------------------------------------------------|-----------------------------------------------------------------------------------|-----------------------------------------------------------------------------------|------------------------------------------------------------------------------------|
| “T” Series |  |  |  |  |
| “I” Series |  |  |  |  |
| “RF” Series |  |  |  |  |
| “BU” Series |  |  |  |  |
| “R” Series |  |  |  |  |



Sales | North America

ryan@ni-steel.com

info@ni-steel.com

Tel. +1) 917-579-5917

www.ni-steel.com

Manufacturing

9, Barangondan-ro, 3-gil, Hyangnam-eup, Hwaseong-si, Gyeonggi-do, South Korea

manufacture@ni-steel.com

