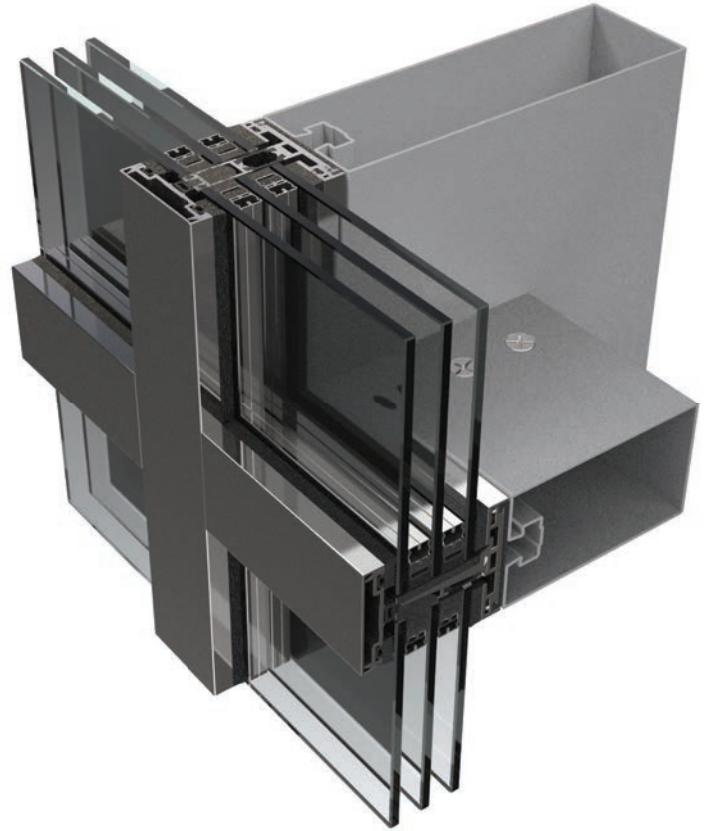


NI "RF" Series (Roll Forming Steel)



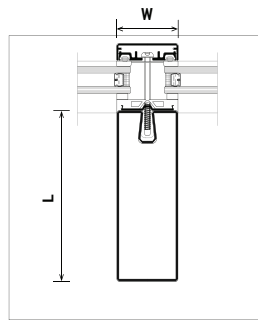
Features

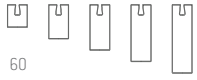
- Traditional Mullion look that can reach higher span
- Solid steel cylinder laser-fused
- Lighter than other series
- Thermally broken system
- Customized Beauty cap available
- 100% Robotic fabrication process
- Mullion width and depth: Custom size
- Glass thickness: 1" AND 1-3/4" available
- Finish:
 - + Steel: Powder coat (AAMA 2603 / 2605)
 - + Aluminum: PVDF 70% (AAMA 2603 / 2605)
- Steel Grade and Aluminum Alloy:
 - + Steel: A36 or higher
 - + Aluminum: 6061/6063 (T5 & T6) available
- Front system:
 - + Stick built (Beauty cap and SSG), Toggle SSG and Cassette available
 - + Compatible to Major Curtainwall systems
- Thermal Separator (Polyamide)



Advantage

- Thermally Broken system
- Easy to install
- Custom Free Form design
- Custom Depth and Width of Mullion
- Larger day light opening from interior Look
- Compitible to Major Curtainwall systems
- Traditional Mullion Look
- Light system weight
- Cost Effective



Feature	
Manufacture	Roll-Forming
Finish	Powder coat
Connection Type	2 side / 4 side / Captured
Application	Structure-centered [Rigidity]
Elevation Width (mm)	
Length (mm)	61 91 121 151 181

Thermal Performance

*U-Factor: 0.28 - 0.31

*SHGC: 0.22

